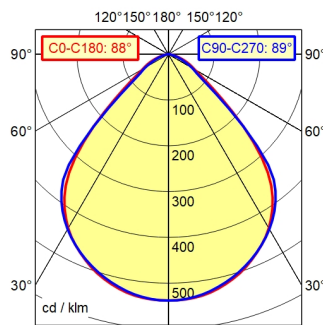
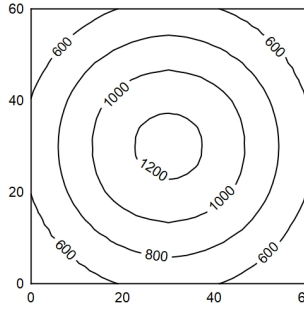


- CEE 7/XXVI
- BS 1363
- NEMA 1-15P

A50 | 100.0% Φ: 600 lm



60 x 60 cm Φ: 600 lm
 Em: 830 lx
 Emax: 1257 lx
 Emin: 430 lx



Height (m)	Beam Diameter (m)	Illuminance (lx)	Beam Diameter (m)
0.25	0.48	5164	0.49
0.50	0.96	1291	0.98
0.75	1.44	574	1.47
1.00	1.92	323	1.96

- Light source**
- Work equipment**
- Connected load**
- Secondary tension**
- Power consumption**
- Sec. power consumption**
- Luminous flux**
- Luminous efficiency ¹⁾**
- Light type/-color**
- Colour temperatur**
- Color rendering index**
- Light distribution**
- Beam angle**
- Chromaticity tolerance LED**
- Glare control**
- System of protection/Class**
- Technology**
- Operation**
- Housing**
- Light source cover**
- Arm**
- Mains lead**
- Fastening**
- Energy efficiency class**
- EPREL number of lightsources**
- EAN**
- Weight without/incl. packaging**
- Packaging dimensions**
- Special features**

- LED
- Electronic plug-in transformer
- 100 - 240 V; AC; 50 Hz; 60 Hz
- 24 V
- ca. 7 W
- ca. 6 W
- approx. 600 lm
- approx. 100 lm/W
- Cold white
- approx. 4.000 K
- CRI ≥ 90; R9 ≥ 50
- Direct; Symmetric; approx. 100 %
- 90°
- < 3 SDCM
- Reflector
- IP 20; II with plug-in power supply, III without plug-in power supply
- Continuously dimmable
- Push button
- Aluminium; Painted; White
- Clear; Plastic
- White
- ca. 3 m; Mains plug; CEE 7/XXVI; BS 1363; NEMA 1-15P
- Adaptor (accessory); Tap16; Table base (accessory); Table clamp (accessory)
- D
- 1347098
- 4013330063115
- ca. 1 kg; 1,7 kg
- ca. 710 mm; 300 mm; 105 mm
- Automatic switchoff adjustable; Behaviour at net recovery adjustable; Push button in luminaire head

¹⁾ For luminaires with separate control gear, the luminous efficacy refers to the luminaire head without control g

