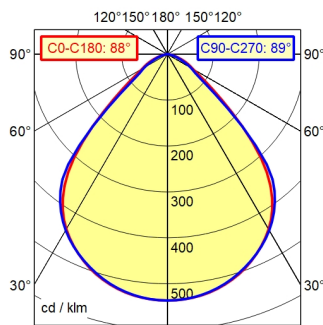
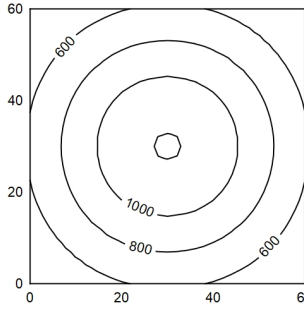


A50 | 100.0% Φ: 580 lm



60 x 60 cm Φ: 580 lm
 Em: 805 lx
 Emax: 1209 lx
 Emin: 419 lx



Φ: 580 lm E 0°

0.25 m	4979 lx	0.48 m 0.49 m
0.50 m	1245 lx	0.96 m 0.98 m
0.75 m	553 lx	1.44 m 1.46 m
1.00 m	311 lx	1.92 m 1.95 m

- light source
- work equipment
- connected load
- power consumption
- luminous flux
- luminous efficiency
- light type/-color
- colour temperatur
- color rendering index
- light distribution
- direct ratio
- beam angle
- chromaticity tolerance LED
- glare control
- system of protection
- class of protection
- technology
- operation
- housing
- cover
- arm
- weight (net)
- mains lead
- fastening
- special features

- LED
- electronic plug-in transformer
- 100 - 240 V; Wechselstrom (AC); 50 Hz; 60 Hz
- ca. 7 W
- approx. 580 lm
- approx. 96 lm/W
- warm white
- approx. 3.000 K
- CRI > 90; R9 > 50
- direct; symmetric
- approx. 100 %
- 90°
- < 3 SDCM
- plastic reflector
- IP 20
- II with plug-in power supply, III without plug-in power supply
- continuously dimmable; no notice
- push button
- aluminium; painted; black
- clear; plastic
- Jet black
- ca. 1 kg
- ca. 3 m; mains plug; CEE 7/XVI; BS 1363; NEMA 1-15P
- adaptor (accessory); tap16; table base (accessory); table clamp (accessory)
- automatic switchoff adjustable; behaviour at net recovery adjustable; push button in luminaire head

