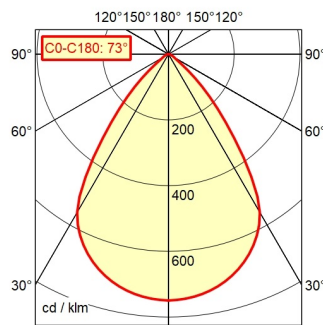


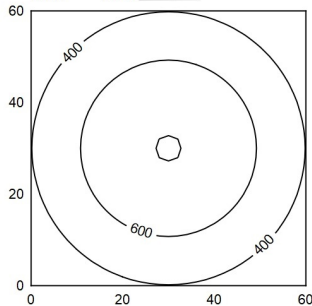
CEE 7/XXVI

A60 | 100.0% Φ: 300 lm



60 x 60 cm Φ: 300 lm

Em: 522 lk
Emax: 806 lk
Emin: 199 lk
= 50 cm



Light source	LED module
Work equipment	Electronic plug-in transformer
Connected load	100 - 240 V; AC; 50 Hz; 60 Hz
Secondary tension	5 V
Power consumption	ca. 4 W
Sec. power consumption	ca. 3,5 W
Standby	ca. 0,3 W
Power factor	env. 0,97
Luminous flux	approx. 300 lm
Luminous efficiency ¹⁾	approx. 96 lm/W
Light type/-color	Cold white
Colour temperatur	approx. 4.000 K
Color rendering index	CRI ≥ 80
Light distribution	Direct
Direct ratio	approx. 100 %
Beam angle	73°
Chromaticity tolerance LED	< 3 SDCM
Glare control	Optics
System of protection	IP 20
Class of protection	II with plug-in power supply, III without plug-in power supply
Technology	Continuously dimmable; DC control signal
Operation	Push button
Emergency lighting	none
Housing	Plastic; Untreated; Umbra grey
Light source cover	Polycarbonate (PC); Satine
Arm	Tubular aluminium section; Anodized; Tubular section upright; Titanium
Balance of articulation joints	Friction
Mains lead	ca. 1,5 m; Mains plug; CEE 7/XXVI
Fastening	Adaptor (accessory); Table clamp (accessory); Table base
Energy efficiency class	E
EAN	4013330143527
Weight (net)	ca. 1,9 kg
Weight incl. packaging	ca. 2,8 kg
Packaging dimensions	ca. 990; 190; 130
Special features	Push button in luminaire head

¹⁾ For luminaires with separate control gear, the luminous efficacy refers to the luminaire head without control g