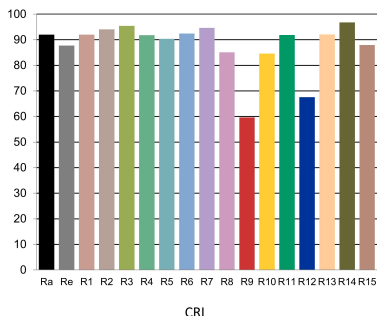
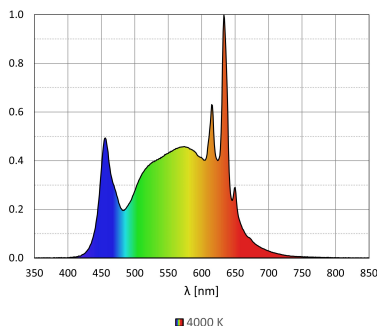
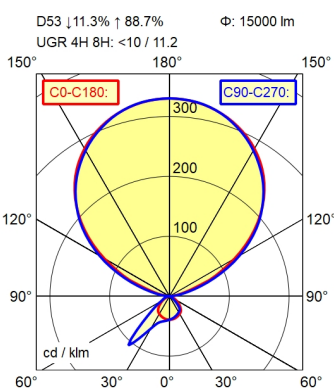
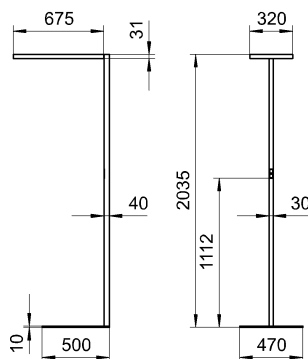


Free-standing luminaire LAVIGO.single LTX DPS 15000/940/RX/SW/CEE/SE/C/G3

121866000-00816468



- Work equipment**
- Connected load**
- Power consumption**
- Luminous flux**
- Luminous efficiency ¹⁾**
- Light type/-color**
- Colour temperatur**
- Color rendering index**
- Light distribution**
- Chromaticity tolerance LED**
- Glare control**
- Luminance (L65)**
- UGR class (4H 8H; EN 12464-1)**
- System of protection/Class**
- Technology**
- Operation**
- Housing**
- Light source cover**
- Arm**
- Luminaire base**
- Mains lead**
- Fastening**
- Decorative contrast side parts**
- Life expectancy LED**
- Energy efficiency class**
- EPREL number of lightsources**
- EAN**
- Weight without/incl. packaging**
- Packaging dimensions**
- Special features**

Electronic ballast
220 - 240 V; AC; 50 Hz; 60 Hz
approx. 90 W
approx. 15.000 lm
approx. 166 lm/W
Cold white
approx. 4.000 K
CRI ≥ 90; R9 ≥ 50
Direct/indirect; approx. 11 %
< 3 SDCM
Prism aperture
≤ 3.000 cd/m²
≤ 16
IP 20; I
Multiple daylight-dependent motion sensors
Multi-function switch
Steel/plastic; Powder coatet; Jet black
Acrylic (PMMA); Structured
Steel tube; Powder-coated; Tubular section upright; Jet black
C-shaped; Jet black
approx. 3 m; Mains plug; CEE 7/VII
Floor standing base
Jet black
L80B50 60.000h
B; C
2226196; 2226239
4013330191177
approx. 18,3
approx. 0 mm; 0 mm; 0 mm
Swarm control; Asymmetric radiation; Separated, direct and indirect light individually adjustable; Flicker-free; Direct light component with edge light and light-guide technology for homogenous light exit; App control; Optional LTX Cloud connection; LTX multisensor for workplace optimisation; TALK Bluetooth; TALK EnOcean

¹⁾ For luminaires with separate control gear, the luminous efficacy refers to the luminaire head without control g