

PRESS RELEASE

Villingen-Schwenningen, 12.03.2020:

Very slender, very powerful

The new LINURA.edge surface-mounted luminaire by Waldmann.

The new LED linear luminaire LINURA.edge by Waldmann combines strong light with an extremely compact shape. As a versatile IP54 lighting solution for a wide range of machine applications, its optimum price-performance ratio makes it an absolute winner.

LINURA.edge provides a powerful, homogeneous, neutral white light for the best visibility. Thanks to the highly compact electronics, its slender 25 mm diameter ensures it will fit perfectly even in the most confined spaces. It is available in ten lengths ranging from 195 to 1455 mm to provide the right lighting solution for the most diverse applications. The special design of the luminaires means they are perfectly suited to each application, and can also be daisy-chained together.

With a body made of aluminium, lens made of PMMA, side parts made of glass-fibre-reinforced plastic (GRP) and a specially developed sealing concept of IP54 for the lens and side parts, LINURA.edge is impervious to high ambient temperatures, liquids and dust.

Installing LINURA.edge is quick and easy thanks to the universal luminaire brackets and clip system plus M12 plug connectors. Existing mounting holes from earlier models can be used. The flexible brackets, which have an adjustment range of +/- 60 degrees and also fit standard aluminium system and switch cabinet profiles, are included in the delivery.

Thanks to the use of the latest LED technology with an output of 170 lumen per watt, plus a clouded lens for the optimum light distribution and efficiency, LINURA.edge

has an excellent cost-efficiency ratio. Smaller, or fewer, luminaires are required to provide the same amount of light as earlier models did. This clearly saves costs.

A digital input provides powerless switching. From this summer, the accessories will include a switch for manual operation or a laser-based remote sensor with M12 plug connectors for automatic switching. LINURA.edge will also be available with an Advanced Package for gradual dimming at the same time. An RGB luminaire can also be connected in this version.

Captions

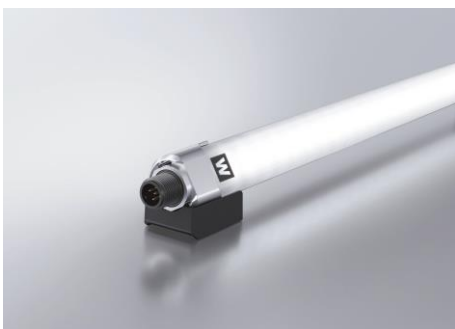
© Waldmann, printing free of charge



B1_ LINURA.edge: the new IP54 lighting solution by Waldmann for a wide range of machine applications



B2_ Slender, strong and inexpensive: the LINURA.edge surface-mounted luminaire



B3_ Easy installation thanks to the universal luminaire holder and clip system and M12 plug connectors

Waldmann – Engineers of Light

Anyone based in the Black Forest must shine very brightly indeed. Today, the fourth generation of the Waldmann family develops lighting solutions that provide people with the optimum support whatever they are doing, whether in the office, on machinery, in industrial workplaces or working in healthcare. The "Engineers of Light" are constantly re-thinking light. For over ten years, Waldmann's biodynamic luminaires (Human Centric Lighting) have been providing people who spend a lot of time working indoors with the positive effects of natural light. With its digital solutions, the lighting experts are able to get the most out of the floor space and the company's staff, or provide more safety in healthcare.

Press Contact:

Silke Weidenfeld, press office Herbert Waldmann GmbH & Co. KG,
Peter-Henlein-Strasse 5, 78056 Villingen-Schwenningen,
Phone: +49 (0) 7720 601-243, E-mail: s.weidenfeld@waldmann.com

Follow us:

