

---

**SUPPORT ARM SYSTEMS FOR MEDICAL APPLICATIONS**  
QUALITY AND PRECISION



# SUPPORT ARM SYSTEMS.

## WE ARE IMPLEMENTING YOUR PROJECT.

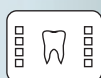
**You have the device.**

**We have the right support arm system.**

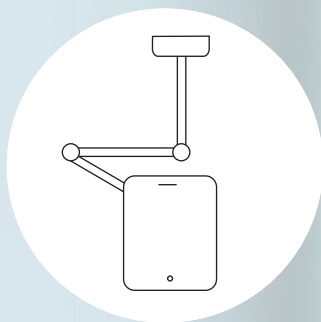
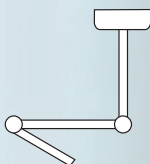
Derungs offers you a complete service package, from connection of your object to approval. Rely on our many years of experience with support arm systems.

Choose from our high-quality standard portfolio or work with us to develop your individual product solution for completely new applications. In doing so, we always keep an eye on product usability and cost-effective producibility.

### Medical applications



### Derungs arm system



### Connecting the new product

# TENO. SUPPORT ARM SYSTEM.

## An elegant support arm system

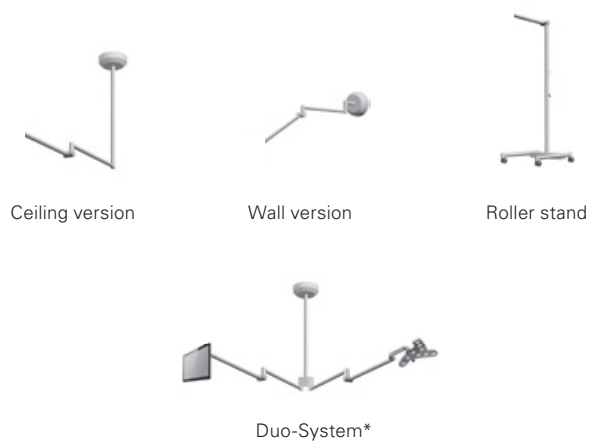
The individually adjustable spring-balanced arm allows optimal support – regardless of the load. TENO has an optimal action range thanks to a reach of 152 cm, joints with 360° rotation, and a +45°/-65° movement angle. TENO comes in a duo version on request.



## TENO support arm System compact

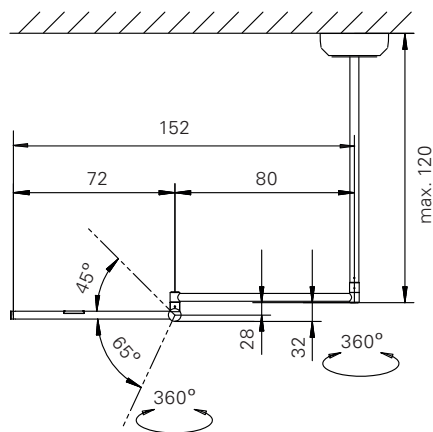
- Positioning with less effort
- High position accuracy
- Application-specific load up to 30 nm
- Easy installation
- Fastens to wall, ceiling or roller stand
- Duo-System\*
- Ondal-compatible connection\*

\*On request

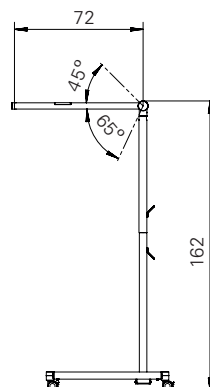


## TENO support arm System technical

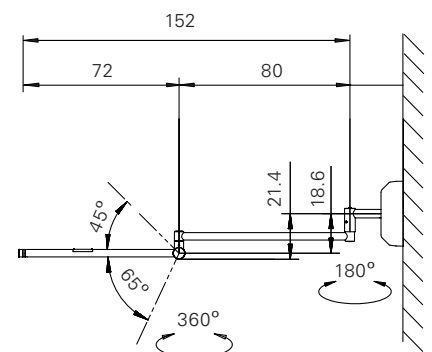
Length of spring-balanced arm to center of gravity (mm)*	Load at center of gravity (N)	Cable diameter max. (mm)
800	40	8
900	35	8
1000	30	8
1100	25	8



Ceiling



Mobile



Wall

# TENO. THE SMART SOLUTION.

Support arm systems for medical applications. TENO is the optimal support arm system for mounting examination and minor procedure lights, as well as flat screen monitors or patient multimedia systems.

TECHNICAL  
DATA ONLINE

[derungslicht.com](http://derungslicht.com)

suitable for  
Laboratories, medical  
practices, clinics, etc.

**TESTED  
MEDICAL DEVICE**

compliant with  
EN 60601-1



We develop

**SWISS  
ENGINEERING**

your new object  
connection

# VISO. SUPPORT ARM SYSTEM.

## The proven support arm system

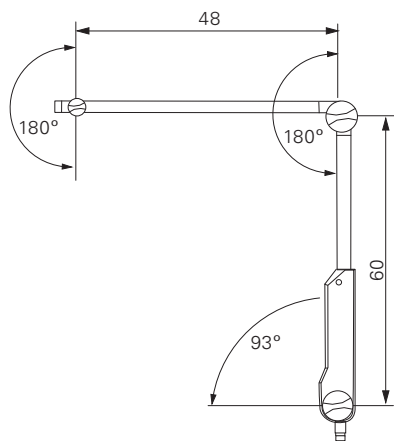
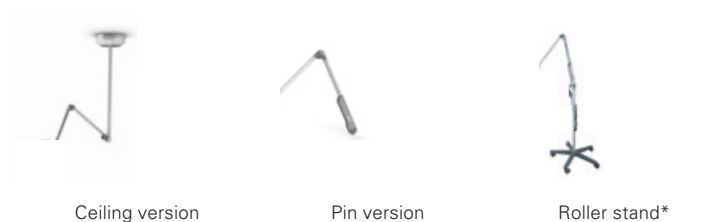
Long-lasting, safe and economical. The VISO support system is equipped with an integrated converter. The premium aluminum arm has a very durable, spring-balanced friction-joint for effortless positioning and locking.



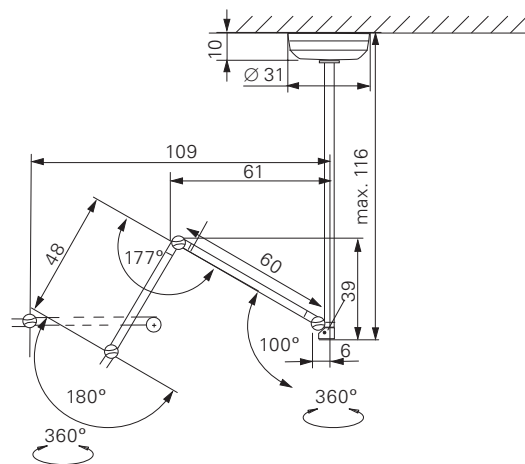
### ViSO support arm System compact

- Easy to position
- Multiple spring-balanced
- Application-specific load up to 10 nm
- Easy installation
- Fastens to wall, ceiling or roller stand
- Individual fastening adapters\*

\*On request



Pin version



Ceiling

### Support arm systems – Examples of customer-specific applications

In collaboration with the Neurowerk company, an arm system with an individual connection has been developed for the neuro-physiological measuring system for the EMG4 and the F40 photo simulator for EEGs.



photo simulator  
NEUROWERK F40



NEUROWERK EMG

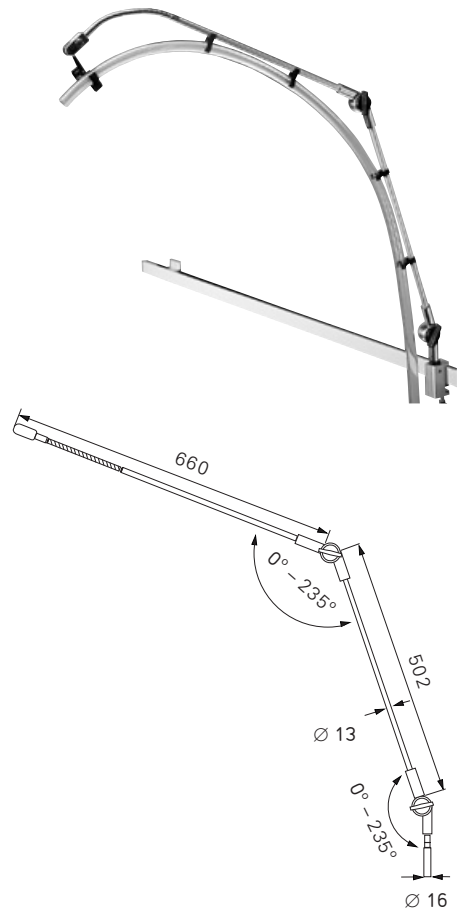
# ADJUSTOMAX. HOSE HOLDER SYSTEM.

## The secure hose holder system

The ADJUSTOMAX – AM 2L light hose holder system is distinctive for its two long-lasting friction joints and premium materials. With invasive ventilation, a stable hold of the tubing system can be vital. In such situations, the established hose holder system provides absolute safety.

### ADJUSTOMAX – AM 2L compact hose holder system

- Stable design of matt chromed, naturally anodized aluminum
- Torque joint relief
- Pin  $\varnothing$  16 mm-W
- Fastens to wall, ceiling or roller stand
- Included:  
Double ball bracket, 6 cable brackets, 6 hose holders



Pin version

Headquarters in Germany

Herbert Waldmann GmbH & Co. KG  
Peter-Henlein-Straße 5  
78056 Villingen-Schwenningen  
Germany  
Tel.: +49 7720 601-0  
Tel. +49 7720 601-100 (sales)  
Fax +49 7720 601-290  
www.waldmann.com  
sales.germany@waldmann.com



Center of Expertise for Healthcare:

Derungs Licht AG  
Hofmattstrasse 12  
9200 Gossau  
Switzerland  
Tel. +41 71 388 11 66  
Fax +41 71 388 11 77  
www.derungslicht.com  
mailbox@derungslicht.com

Derungs Licht AG is a member  
of the Waldmann Group.

